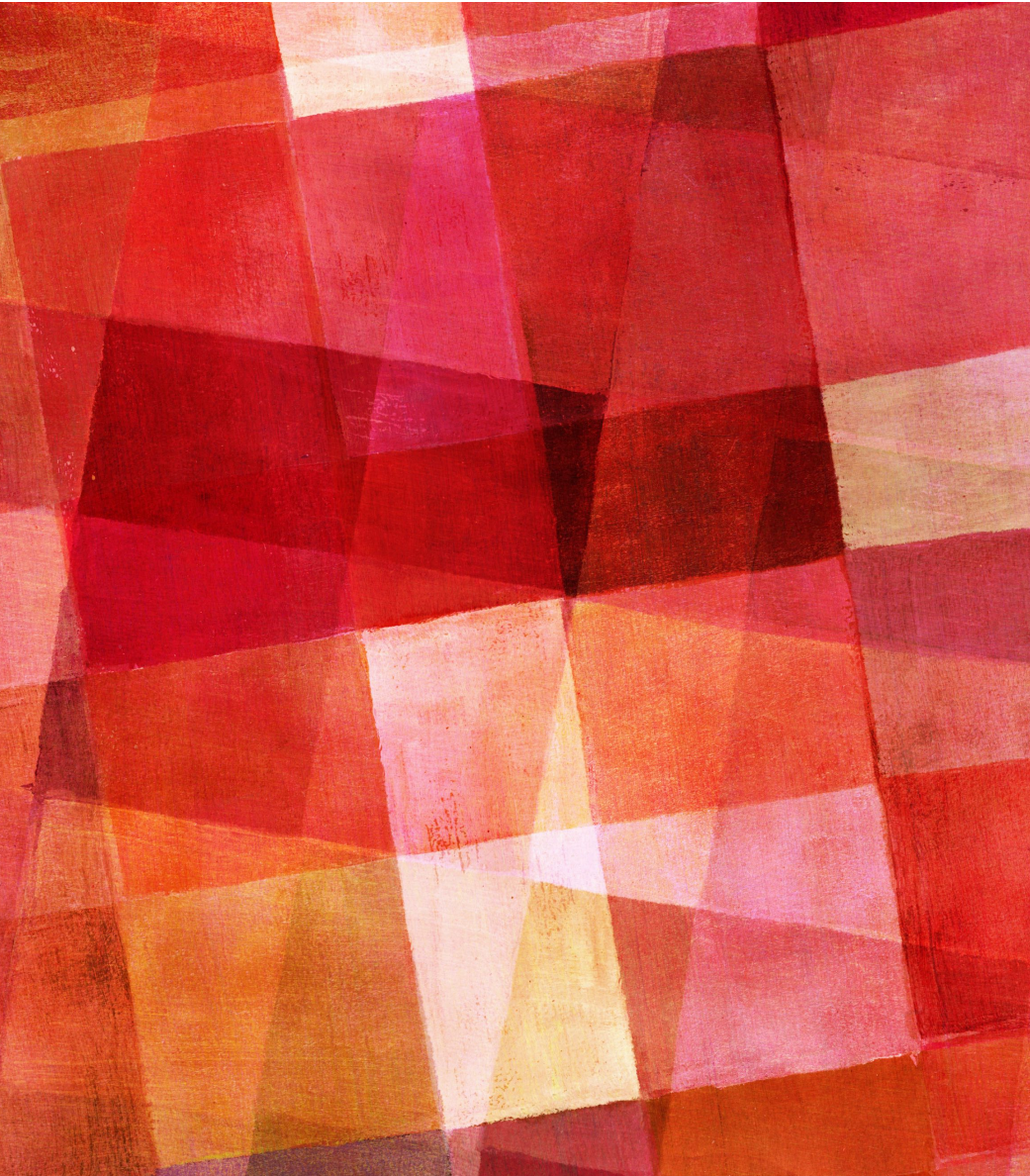




BYLAWS

ACADEMY OF SERVANT LEADERS





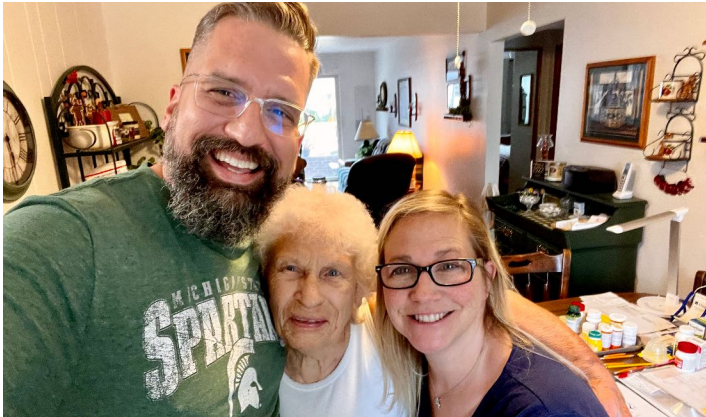
JOSHUA BRANDT

Associate State Pastor
The Church of God in Michigan

joshua@micog.org

Work: 517-347-3198

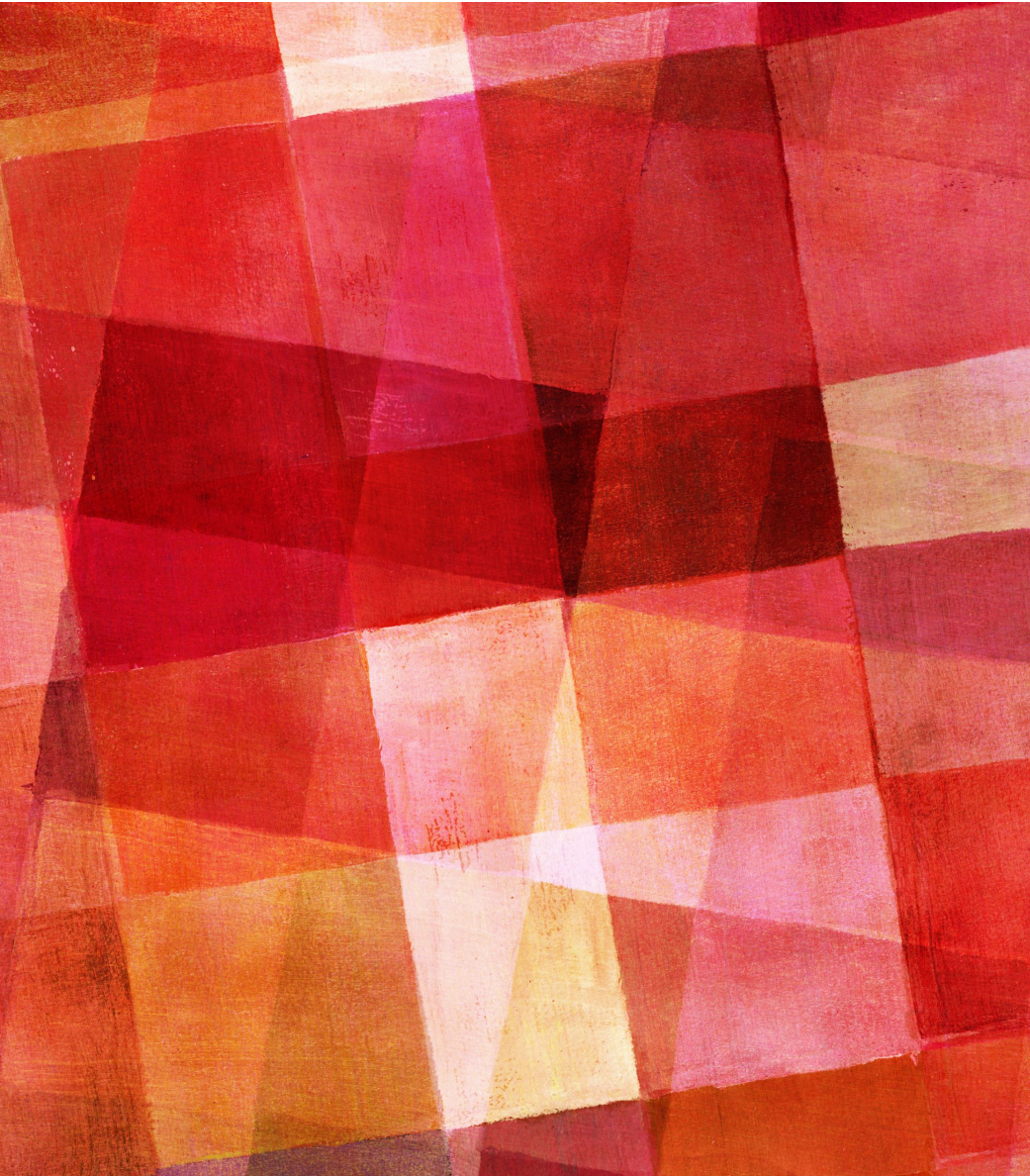
Cell: 765-425-3538



PRESENCE | HUSBAND | FATHER



LIVERPOOL | VEGETARIAN | HIKING



JOSHUA BRANDT

Associate State Pastor
The Church of God in Michigan

joshua@micog.org

Work: 517-347-3198

Cell: 765-425-3538

**WHAT IS THE MOST IMPORTANT
THING TO ME RIGHT NOW?**

Q&A

BYLAWS

- Have them
- Know where they are
- Read them
- Follow them

PAUSE & RESET

**NON-PROFIT LAW
BYLAWS
GUIDING PRINCIPLES
(AND/OR BPM)
POLICIES**

FOUNDATION ISSUES

BEFORE YOU START

*Philosophy of Ministry
&
Philosophy of Governance*



PHILOSOPHY OF MINISTRY

Mission
Vision
Core Values



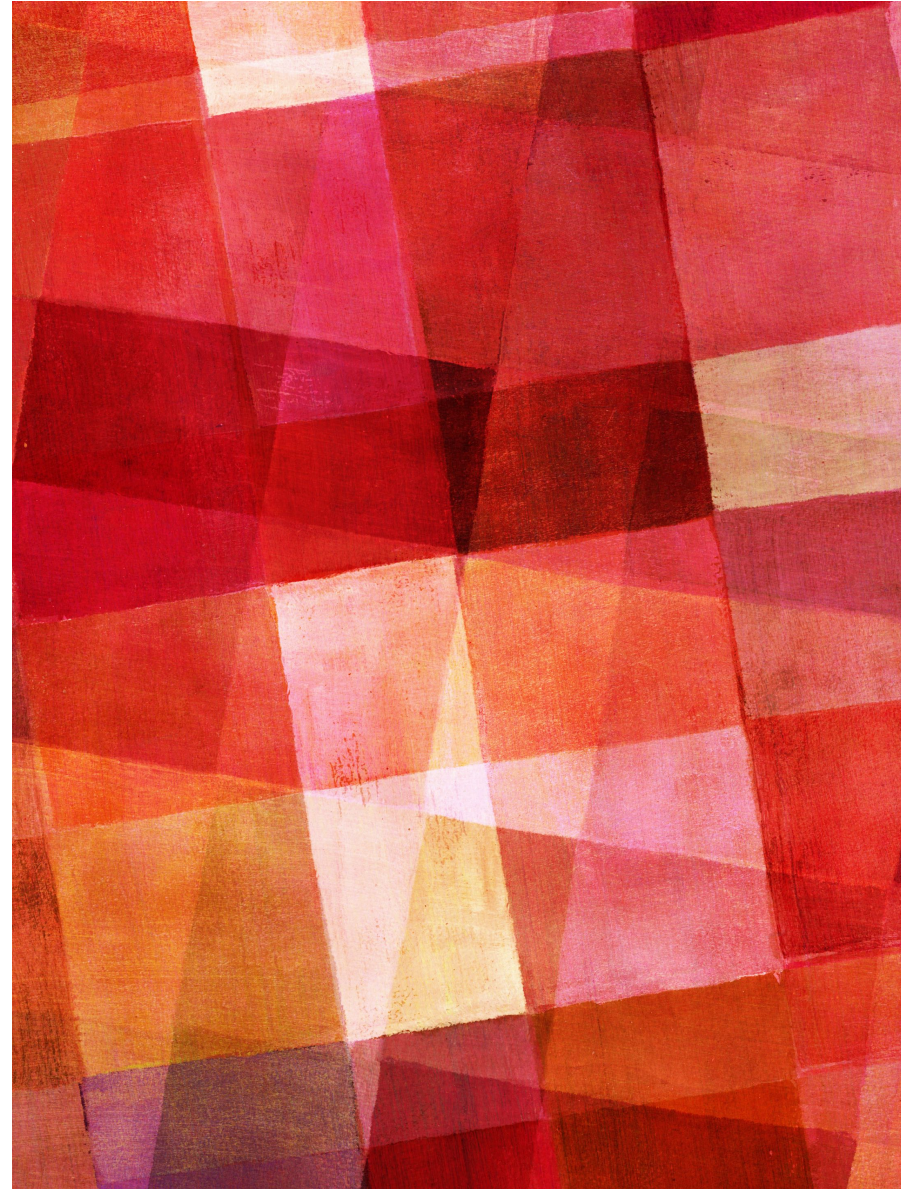
PHILOSOPHY OF MINISTRY

Mission
who we are



PHILOSOPHY OF MINISTRY

Vision
what we do



PHILOSOPHY OF MINISTRY

Core Values
what we value



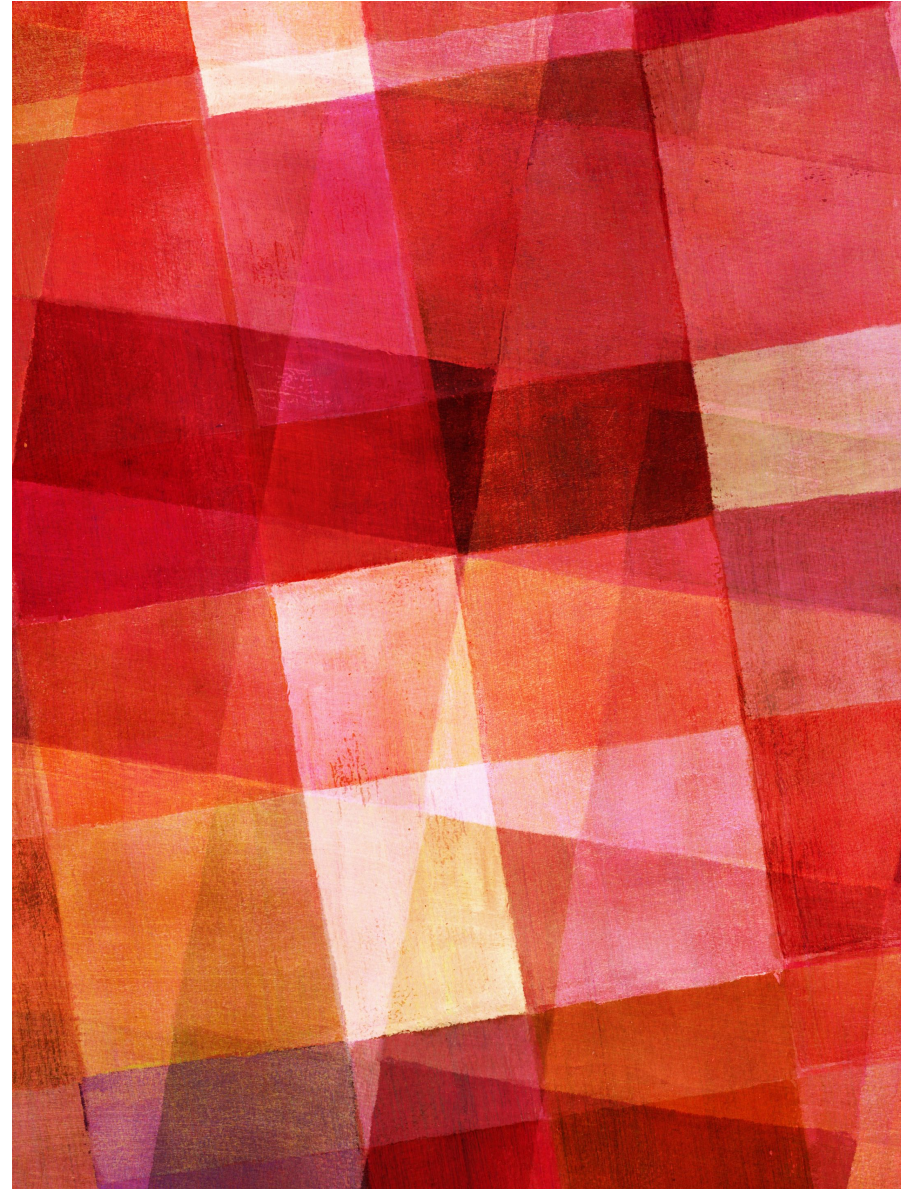
BEFORE YOU START

*Philosophy of Ministry
&
Philosophy of Governance*

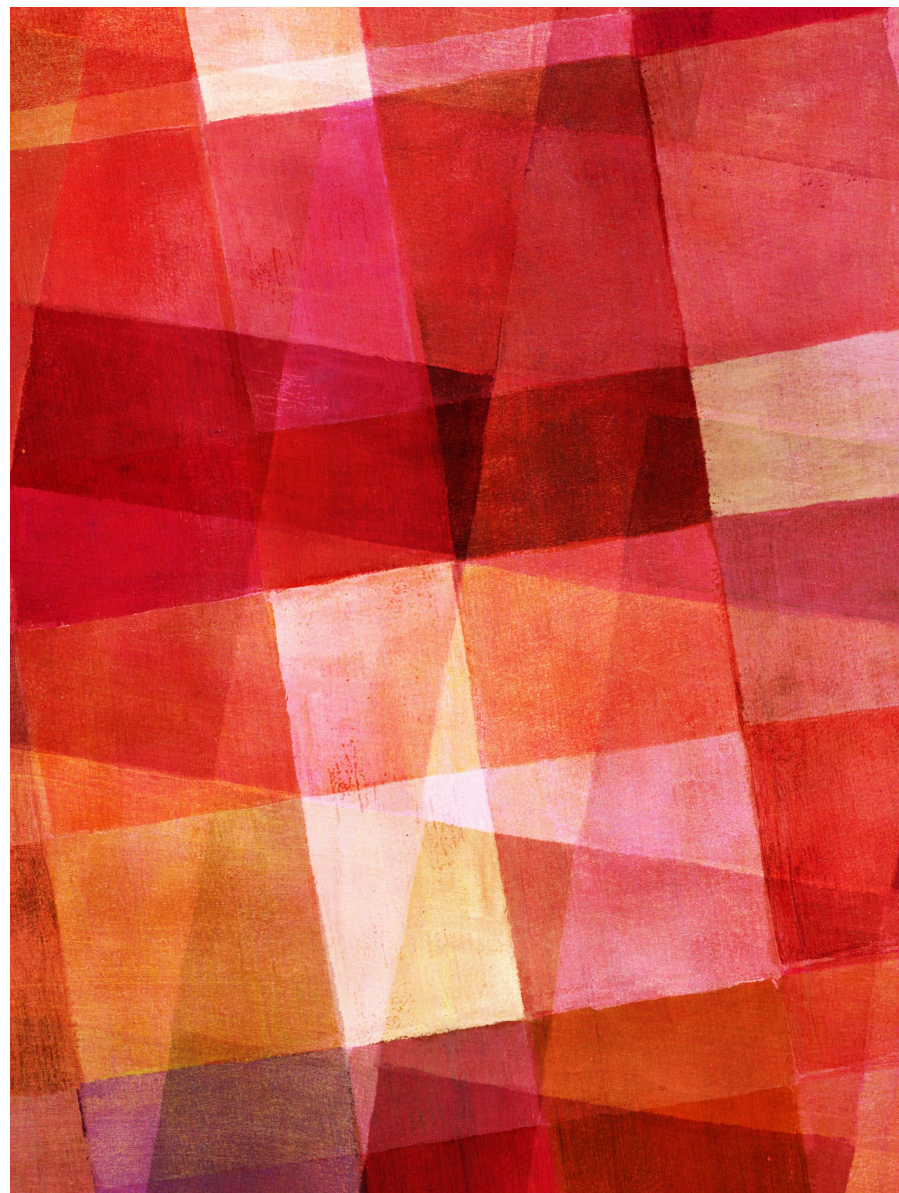


PHILOSOPHY OF GOVERNANCE

Who runs the
church?



.....



PREPARATION MAKES ROOM

WHAT NEEDS TO BE INCLUDED?

WHAT NEEDS TO BE INCLUDED?

Name | Church

Purpose

Member Eligibility

WHAT NEEDS TO BE INCLUDED?

Pastor | Role, Authority, and Responsibilities

Elders | Governing Board

Officers | Who does what

WHAT NEEDS TO BE INCLUDED?

Meetings

What requires a vote?

Committees

WHAT NEEDS TO BE INCLUDED?

Indemnification

Dissolution

COMMON MISTAKES

COMMON MISTAKES

16 YEAR OLDS VOTING

COMMON MISTAKES

REMOVAL & RESIGNATION

COMMON MISTAKES

RIGIDITY

COMMON MISTAKES

LACK OF CLARITY

RECOMMENDATIONS

RECOMMENDATIONS

PASTOR
CHURCH OF GOD CREDENTIALS

RECOMMENDATIONS

STATEMENT OF FAITH *WESLEYAN-HOLINESS* *CHURCH OF GOD TEACHING* *TRADITION*

RECOMMENDATIONS

DISSOLUTION
CONDITIONAL DEED

RECOMMENDATIONS

ANNUAL MEETING

TALK ABOUT BYLAWS EACH YEAR

Q&A

RESOURCES

Evangelical Council

for Financial Accountability | ecfa.org

Brotherhood Mutual | brotherhoodmutual.com

Church Law & Tax | churchlawandtax.com



POLICIES

ACADEMY OF SERVANT LEADERS



WHY POLICIES?

WHY POLICIES?

BOUNDARIES

WHY POLICIES?

PERMISSION AHEAD OF TIME

BOUNDARIES

GUIDING PRINCIPLES

Mission Principles
Boundary Principles
Accountability Principles

BOARD POLICIES MANUAL

HOW THE LEADERSHIP BOARD OPERATES

CRUCIAL & OFTEN MISSING

Confidentiality
Conflict of Interest
Record Retention

STAFF HANDBOOK

Vacation
Sabbatical
Parental Leave

FINANCE POLICIES

How funds are counted/deposited

Gift Acceptance Policy

Memorial Fund

Accountable Reimbursement Policy

PROPERTY POLICIES

Who can use the building & when
Key Policy
Wedding Policy

CHILDREN & YOUTH PROTECTION

*Background Checks
Sex Offender Policy
Cameras*

Q&A

RESOURCES

Evangelical Council

for Financial Accountability | ecfa.org

Brotherhood Mutual | brotherhoodmutual.com

Church Law & Tax | churchlawandtax.com

