



Church Policies: Purposeful Protection

Rev. Mark K. Richardson, State Pastor

September 28, 2024

Academy of Servant Leaders, Track 1, Session 5

A Quick Review



Rules of Engagement
&
Practices



**Are they really
that important?
After all, this is
a church not a
business!**

Yes, they are
very important,
and guess
what...a church
is a non-profit
business!



**Key Documents,
codified in our
Policies, answer
the key questions
that affect the
Stability and
success of
the Church**



And demonstrate...



G
O
O
D

O
R
D
E
R

C
O
M
P
L
I
A
N
C
E

D
U
E

D
I
L
I
G
E
N
C
E

W
I
S
D
O
M



Church Safety Policies

- **Children / Youth Protection Policies**
- **Sexual Harassment/Abuse Policies**
- **Facility / People Protection Policies**
- **Firearms & Security Policies**
- **ADA Policies**
- **Security Team Policies**
- **Disaster Preparation / Recovery Policy**
- **Emergency Policies (Fire, Medical, etc.)**

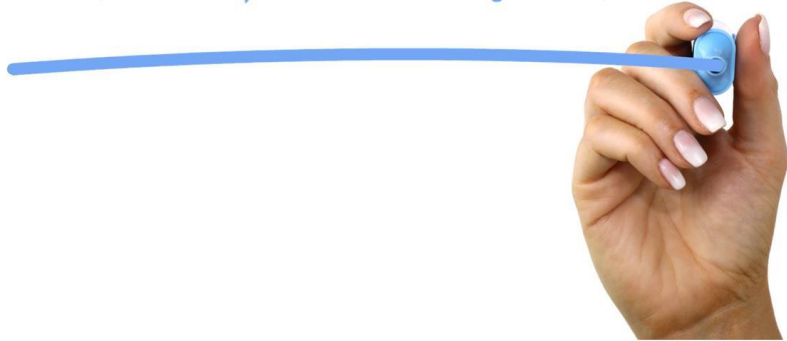
Financial Policies

- **Offerings & Gifts Policies**
- **Cash Management Policies**
- **Giving Statement Policy**
- **Financial Accounting / Reporting Policies**
- **Housing Allowance Policy**
- **IRS Requirements Policies**
- **Employee Overtime Policy**

Must Have Policies

- **Conflict of Interest Policy**
- **Background Screening Policy**
- **Building Use Policies**
- **Liability Insurance Policies**
- **Policies Specifically Required by Bylaws**
- **Confidentiality Policies**
- **Employment Non-Discrimination Policies**

LEADERSHIP



Should Have Policies

- **Statement of Faith & Affiliation Policies**
- **Congregational Dissolution & Deeding Policy**
- **Ministry / Leadership Transition Policies**
- **Termination / Resignation Policies**
- **Communication Policies**
- **Technology Usage & Social Media Policies**
- **Church Meals / Picnics Policies**
- **Same Sex Policies**
- **Service Animals Policy**





Wise to Have Policies

- **Conflict Resolution Policy**
- **Guest Speakers / Musicians Policies**
- **Wedding & Funeral Policies**
- **Mission Support Policies**
- **Sabbatical Policies**
- **Personal, Family & Medical Leave Policies**
- **Maternity Policy**
- **Vacations / Conferences / Camps Policies**
- **Continuing Education Policies**





NEEDS

Other Policies as Needed

- **Endowment Policies**
- **Satellite Site & Multiplication Policies**
- **Education Policies (Sunday School, etc.)**
- **Intern Policies**
- **UBIT Policies**
- **Church Sales / Fundraiser Policies**
- **New Ministry Opportunities Policies**



Don't Get Overwhelmed!

It's a Process

It Takes Time

It Takes Research

It Takes Focus

It Takes Flexibility

It Takes Diligence





We Will Help You

WORKSHOP TIME

Conflict of Interest Policy

Building Use Policy

Social Media Policy

Service Animal Policy



Thank you

Pastor Mark K. Richardson

517-325-0925

mark@micog.org

www.micog.org



Let Us Pray